



# Healing Well

**Wound Care  
Management**



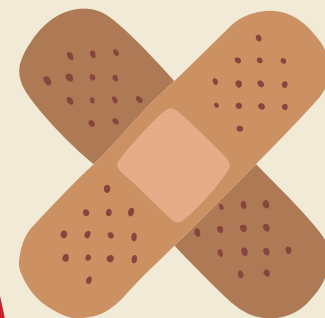
**Madison County  
Memorial Hospital**



## Visit Us

224 NW Crane Avenue  
Madison, FL 32340  
1(850) 253-1981

[www.mcmh.us](http://www.mcmh.us)



Our goal is to focus on a total health approach considering mental and physical wellness.

## Dr. Julia Weeks



Dr. Julia Weeks has over three decades of medical experience, specializing in wound care. Dr. Weeks was born in Birmingham, AL, but spent much of her early years in the Congo, where her parents were missionaries. After completing her medical degree from the University of Alabama School of Medicine at Birmingham, she spent a remarkable 10 years serving as a missionary physician and medical director in the Congo. After years of medical practice in a wide range of organizations, she is now a part of the MCMH team to provide excellent care to the community!

### Why Choose MCMH?

Madison County Memorial Hospital's Wound Care Clinic strives to enhance the quality of life by continuously improving community health through wound care for acute and chronic wounds, as well as by enhancing disease management through advanced wound care therapies by a team of passionate medical providers.

### A Look into Wellness!

Wellness is a holistic approach to physical and mental health far beyond just being free of disease. Building a resilient life through the seven wellness dimensions are essential to empower you to live well, maintain healthy habits, and attain enhanced mental and physical health outcomes.



Are you ready to start your wellness journey?

### Wound Care Services

#### Disease Process with Wounds

- Diabetic wounds
- Peripheral Artery, Venous Stasis, & Pressure Ulcers
- Post-surgical wounds
- Burns
- Animal/bug bite wounds
- And more!

#### Advanced Wound Care

- Acute and chronic wound assessment, dressings, and drainage
- Compression and Negative Pressure therapy
- Peripheral Vascular Disease Screenings and Neuropathy Testing
- Skin substitute grafts and tissue biopsies
- Wound infection management
- Patient and family education
- And more!

